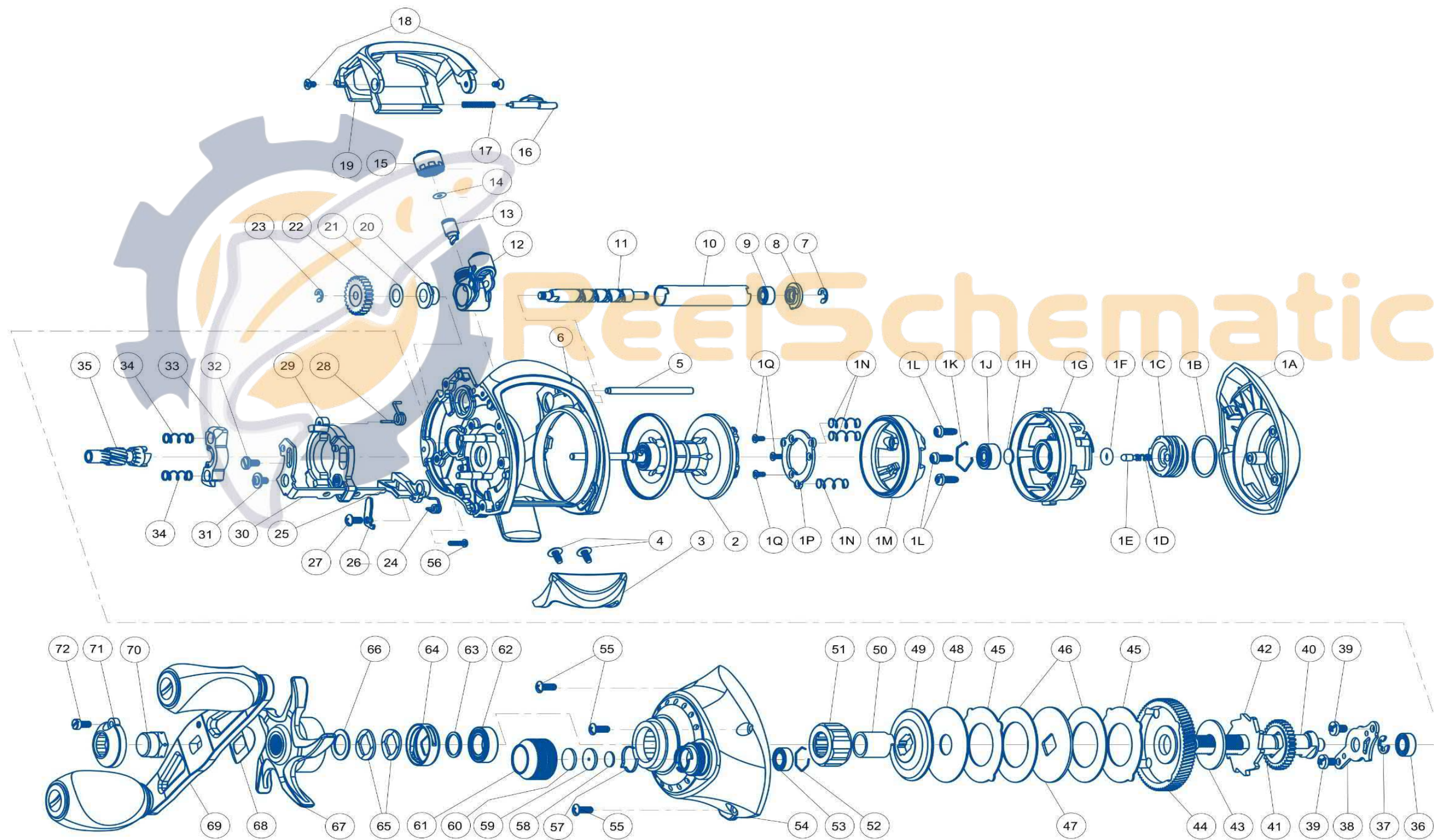


QUANTUM[®]

EN101HPT



QUANTUM EN101HPT PART LIST

Key #	Description	Part No.	Qty	Key #	Description	Part No.	Qty
1	Palm Side Cover Kit include	WA423-03	1	29	Release Slider	ZX039-01	1
	1A - Palm Side Cover	WA023-03	1	30	Flippin Switch	WA087-01	1
	1B - Centrifugal Dial Washer	SB111-01	1	32	Release Slider Screw	DX125-01	1
	1C - Centrifugal Dial	TB026-02	1	33	Pinion Yoke	TB025-01	1
	1D - Centrifugal Dial Click Spring	YW114-01	1	34	Yoke Spring	GX040-01	2
	1E - Centrifugal Dial Click Pawl	PW098-01	1	35	Pinion Gear	WA011-02	1
	1F - Centrifugal Dial Frection Ring	SB105-01	1	36	Crank Shaft Ball Bearing - L	SW017-06	1
	1G - Spool Cover	WA051-01	1	37	E-Clip	QW120-01	1
	1H - Spool Tension Shim	QW032-04	1	38	Crank Shaft Retainer	VA002-01	1
	1J - Ball Bearing - Spool Shaft (Palm)	QV017-04	1	39	Crank Shaft Retainer Screw	JX107-02	2
	1K - Clip Ring	HV080-01	1	40	Crank Shaft	YW008-08	1
	1L - Spool Cover Screw	WW107-01	3	41	O/S Drive Gear	DW112-01	1
	1M - Brake Ring Assembly	WA342-01	1	42	Trip Ratchet	PW083-02	1
	1N - Spring - Brake Ring Slider	DW070-01	3	43	Trip Ratchet Washer	YW111-01	1
	1P - Retainer - Brake Ring Slider Spring	VA129-02	1	44	Drive Gear	WA012-04	1
	1Q - Retainer Screw	DW107-01	3	45	Drag Key Washer	PW048-01	2
2	Spool Assembly	TB321-01	1	46	Drag Disc - A	PW059-02	2
3	Thumb Bar	WA009-01	1	47	Drag "D" Washer	YW045-01	1
4	Thumb Bar Screw	YB107-02	2	48	Drag Disc - B	YW059-01	1
5	Stabilizer Bar	VA061-01	1	49	Drag Washer	VA045-01	1
6	Frame	WA001-51	1	50	One Way Clutch Sleeve	UX052-01	1
7	E-Clip	NX092-01	1	51	One Way Clutch	VA063-01	1
8	Bearing Retainer	DW067-01	1	52	Spool Tension Knob Ball Bearing Retaine	EB080-01	1
9	Worm Shaft Ball Bearing	XX117-04	1	53	Tension Knob Ball Bearing	SW017-06	1
10	Worm Shaft Guide	SB016-01	1	54	Gear Side Cover Assembly	WA324-54	1
11	Worm Shaft	HV072-02	1	55	Gear Side Cover Screw-A	VA053-02	3
12	Line Guide Carrier	VA047-02	1	56	Gear Side Cover Screw-B	VA057-02	1
13	Line Guide Pawl	ZW006-03	1	57	Tension Knob Click Spring	PW114-01	1
14	Line Guide Carrier Washer	BV035-01	1	58	Washer - Spool Tension	QW032-04	1
15	Line Guide Carrier Screw	ZW007-01	1	59	Collar - Spool Tension	VA081-01A	1
16	Side Covr Locking Lever	WA119-01	1	60	Spool Cushion Washer	VA082-01	1
17	Spring - Locking Lever	ZW096-01	1	61	Spool Tension Knob	VA033-03	1
18	Screw	CF107-02	2	62	Crank Shaft Ball Bearing	TW058-09	1
19	Front Support	WA099-02	1	63	Crank Shaft Ball Bearing Washer	TW035-02	1
20	Worm Shaft Bushing - Gear Side	PW068-01	1	64	Drag Click Spring Assembly	YX4114-01	1
21	O/S Pinion Gear Washer	EX035-01	1	65	Spring "D" Washer	JX046-01	2
22	O/S Pinion Gear	DW085-01	1	66	Star Drag Washer	ZW032-01	1
23	E-Clip	NX090-01	1	67	Star Drag	WA055-03	1
24	Kick Lever Spring	ZX097-01	1	68	Handle Washer	NX054-01	1
25	Kick Lever	YW077-01	1	69	Handle Assembly	VA318-08	1
26	Kick Lever Guide Plate	VA161-01	1	70	Handle Nut	DW003-14	1
27	Kick Lever Guide Plate Screw	JX107-02	1	71	Handle Nut Cap	DW034-04	1
28	Release Slider Spring	ZX104-01	1	72	Handle Nut Cap Screw	DW050-02	1